

SIMPLE. MORE. INSPIRING.

Yellow

Operating and Installation
Instructions



Pool control

Yellow Poolcontrol

dinotec GmbH

Water and Pool Technology

Philipp-Reis-Str. 28 • D-61130 Nidderau

Tel.: +49(0)6187 41379-0

Email: mail@dinotec.de • www.dinotec.de

Subject to technical changes. Errors excepted.

Version: 30.04.2026



Table of contents

PART 1: INSTALLATION INSTRUCTIONS 6

- 1 General information 6
 - 1.1 Warranty and Safe Operation 6
 - 1.2 Transport damage 7
 - 1.3 Consequential damage 7
 - 1.4 Disposal..... 7
 - 1.5 Remote access 8
- 2 Technical Data 9
- 3 Delivery includes..... 12
- 4 Wall mounting..... 13
- 5 Cable connections 14
- 6. Connection of measurement equipment..... 15
- 7. Initial commissioning 19
 - 7.1 Preparation..... 19
 - 7.2 Setup assistant (pool configuration) 19
 - 7.3 Setting the target values 20
 - 7.4 Filter times, frost protection and weather..... 20
- 8 Network and dinoConnect 21
- 9 Connection of optional components 22
 - 9.1 ECO contact for roller cover 22
 - 9.2 External inline electrolysis 22
 - 9.3 Building Automation and Interfaces..... 22

PART 2: OPERATING INSTRUCTIONS 23

- 10 User interface concept 23
 - 10.1 The sidebar (menu)..... 23
 - 10.2 Gesture control..... 23
 - 10.3 Full-text search 23
- 11 Home screen (Dashboard) 24
- 12 Operation and basic settings 24



12.1 Main switch and sub-sections	24
12.2 Special modes	25
12.3 Delays (timer)	25
13 Water treatment: Disinfection with chlorine or chlorine-free	25
13.1 Setpoints and alarms	25
13.2 Poolcare (time-controlled)	25
13.3 Control (expert settings)	26
13.4 Manual Continuous Dosing (Shock Chlorination).....	26
14 Water treatment: pH value	26
14.1 Setpoints	26
14.2 Sequential dosing	26
15 Filtration and circulation	27
15.1 Timer.....	27
15.2 Multi-stage filter pump (EcoTouch)	27
15.3 ECO contact	27
15.4 Flow monitoring	27
16 Temperature and heating.....	28
17 Extras	28
17.1 Party mode	28
17.2 Holiday mode	28
17.3 Frost protection	28
17.4 Winterization (active/passive)	29
18 Lighting control	29
19 Maintenance, service and archive.....	30
19.1 Service intervals.....	30
19.2 Calibration archive / Event log	30
19.3 Calibrating the pH electrode	30
19.4 Calibrating the chlorine electrode (option)	30
19.5 Snapshot Manager (System recovery)	30
19.6 Setpoint manager.....	31
19.7 Order request	31



20 System and users	32
20.1 User management and Expert mode	32
20.2 Operation lock / Child safety lock	32
20.3 Signature Light	32
20.4 Design and themes	32
20.5 Reset to Factory Settings	32
20.6 Change of ownership.....	32
21 Data protection	33
22 Services and cloud services	34
23 Troubleshooting	34
24 Operator obligations	35



PART 1: INSTALLATION INSTRUCTIONS

1 General information

Congratulations on purchasing your Yellow Poolcontrol – an excellent choice! You’ll experience the first benefit right away with this guide: it is intentionally kept concise, as the Yellow is intuitive to operate and provides function explanations, troubleshooting suggestions, and AI support directly within the device

This technical document contains instructions for the installation, commissioning, maintenance, and operation of your Yellow. Please read this manual carefully and observe all instructions.

You can download a detailed manual here:



Warning: Electrical installations may only be carried out by a qualified electrician.

Caution: All electrical connections must comply with the local installation regulations. In Germany, they must conform to DIN/VDE 100 standards.

1.1 Warranty and Safe Operation

Warranty with regard to operational safety and reliability is only granted under the following conditions:

- Proper installation, connection, and configuration.
- The Yellow must not be exposed to direct sunlight and must not be operated outdoors without protection.
- Repairs inside the device may only be carried out by dinotec. Unauthorized opening of the device will void the warranty.
- Only original spare parts are used for repairs.
- Appropriate use and correct design.
- Observance of the operating instructions and all information, instructions, and messages displayed on the Yellow Poolcontrol.

Warning: The use of concentrated hydrochloric acid in the immediate vicinity of the device will void the warranty.



Please observe all applicable standards and guidelines for operating the Yellow system in your pool system. For private pool users, we also recommend following the guidelines of the German Association for Swimming Pools and Wellness (BSW).

All functions marked with a lock symbol are only available when logged in (Expert mode). We recommend that settings in Expert mode be made by qualified personnel only.

Your Yellow Poolcontrol left our factory in perfect technical condition. If it can be assumed that safe operation is no longer possible (e.g. due to visible damage or improper storage), the device must be taken out of operation and secured against unintentional switching on.

Note: *Warranty claims must be directed to the authorized dealer who sold the product.*

1.2 Transport damage

The system has been carefully packaged for transport. Please check that the shipment is undamaged and that the delivery is complete. Any transport damage must be reported immediately to the carrier and noted on the delivery note.

1.3 Consequential damage

We cannot accept liability for damages or consequential losses resulting from the operation or use of products from our range, as proper operation or use cannot be monitored by us.

1.4 Disposal

In accordance with the Electrical and Electronic Equipment Act (ElektroG of February 1, 2007), waste electrical and electronic equipment must be disposed of separately from normal household waste to promote reuse, recycling, and other forms of recovery. Please observe local regulations for disposal. Do not dispose of the device in the environment—take it to a designated collection point for electrical and electronic waste and/or consult your specialist dealer for further information.



1.5 Remote access

Your system supports remote access. As is the case with all features of this kind, it can also pose a security risk to your network. We recommend that you coordinate the setup of remote access with your IT consultant to ensure it meets your individual requirements and security needs. dinotec accepts no liability for any damages resulting from security vulnerabilities.

If remote access is enabled, dinotec may, with the owner's authorization, access the system for the purposes of troubleshooting, maintenance, and monitoring.



2 Technical Data

General data	
Wall-mount plastic housing protection class	IP 65
Dimensions system housing	34 cm (H) × 26 cm (W) × 12.5 cm (D)
Weight	2.7 kg (Yellow Poolcontrol with 2 dosing pumps)
Operation	Via 5" colour touch panel
Line voltage	230 V, 50 Hz
Power consumption	35W max.
Integrated peristaltic dosing pumps	230 V, 50 Hz. flow rate 5 l/h
Max. output filtration circulation pump	up to 1.5kW
Enable relay (Red, Green, Blue)	Potential-free contact (not suitable for 230V)
Fuse protection filter circulation pump	16 A
Fuse protection lighting	8 A
Enable relais	100mA/ 30V (not suitable for 230VAC)
Operating conditions	0° to +45°C, non-condensing
Storage temperature	0 to 60 °C
Language	Multilingual
Interface equipment	Ethernet/RJ45 Wi-Fi Bluetooth 4.0 RFID for dinoChip Modbus TCP KNX IP BAOS MQTT DMX/Art-Net



pH measuring & control module	
pH measurement	with combination electrode (glass electrode)
Temperature compensation	With Pt-1000 (measuring cell), 2-wire system
Measuring range	0 – 14 pH
Resolution	0.01 pH
Calibration	2-point using buffer solutions / 1-point method, e.g. photometric
Control outputs	PID controller
Control modes	On/Off Pulse-pause Pulse frequency
Electrode check	Automatic after calibration (slope and zero-point offset)
Control direction	pH raise or reduce (selectable)

Chlorine measuring & control module (option)	
Measurement of oxidant	With potentiostatic combination electrode
Temperature compensation	With Pt-1000, 2-wire system
Measuring range	0-10 mg/l (resolution 0.01mg)
Control outputs	PID controller
Control schemes	On/Off Pulse-pause Pulse frequency
pH value compensation	Automatic
Zero point adjustment	Not required
Calibration	With DPD comparative measurement
Electrode check	Automatic after calibration
Cleaning the electrodes	AEC automat. electrode cleaning (patented)



Redox measuring & control module	
Measurement	With platinum electrode or gold-ring electrode for inline electrolysis versions
Measuring range	0 - 1000 mV
Resolution	1 mV
Control outputs	PID controller
Control modes	On/Off Pulse-pause Pulse frequency
Calibration	With pH electrode

Active oxygen/Poolcare	
Control	Time-controlled (adjustable)
Control scheme	On/Off Initial dosing (duration calculated automatically. Triggered manually.)

Temperature control	
Temperature measurement	With PT1000
Measuring range	-10 to 70°C
Resolution	0.1 °C
Scale °Celsius	°Celsius



3 Delivery includes

Standard version Set 1 pH, Redox with 2 dosing pumps:

- Yellow Poolcontrol (1×)
- pH electrode (1×)
- Redox electrode (1x, not for versions with active oxygen)
- Electrode holder, ½" male thread (2x)
- Injection valve ½" AG (2×)
- Paddle switch, ¾" female thread, preassembled with plug (1x)
- Adhesive saddle with ¾" male thread
- Suction set without low-level signal (2x)
- Suction line (1×)
- Dosing line (1x)
- Buffer solution pH 4 + 7
- Cleaning paste
- Tapping saddle ½" female thread (4x)
- Preassembled mains connection cable for filter pump with Schuko connector (1x)

Screws and wall plugs for wall mounting (3x)

Note: Depending on the version, the scope of delivery may vary.



4 Wall mounting

Use the supplied template supplied and fasten the Yellow to the wall with the 3 screws and wall plugs provided. Screw in the screws until there is approx. 3–4 mm clearance from the wall. Hang the Yellow unit onto the designated mounts and pull it downward until it is firmly seated.

Warning: When connecting the cables from below later, apply counter-pressure from above to prevent the Yellow from being unintentionally pushed out of its mounting.

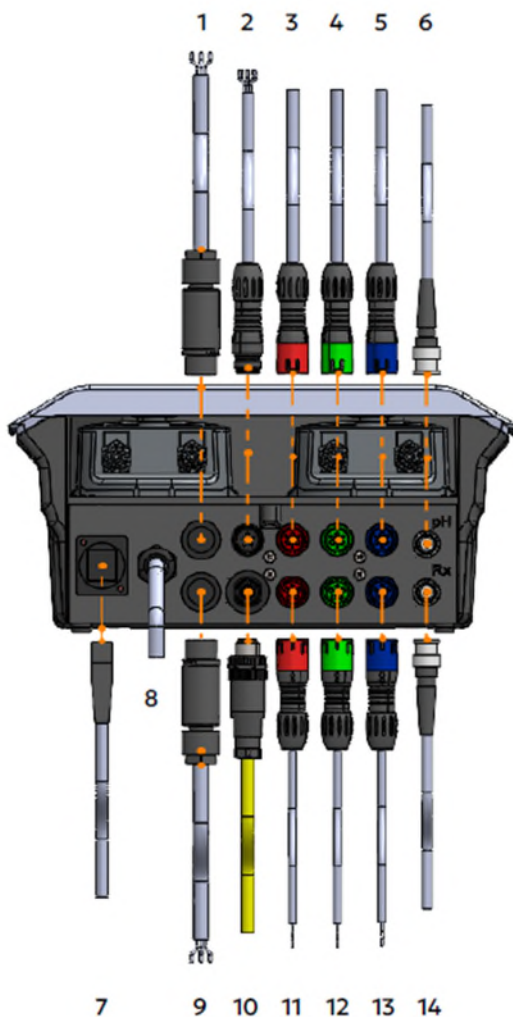
Additional language versions of the drilling template are available for download here:



Note: Ensure that you print the drilling template in its actual size.



5 Cable connections



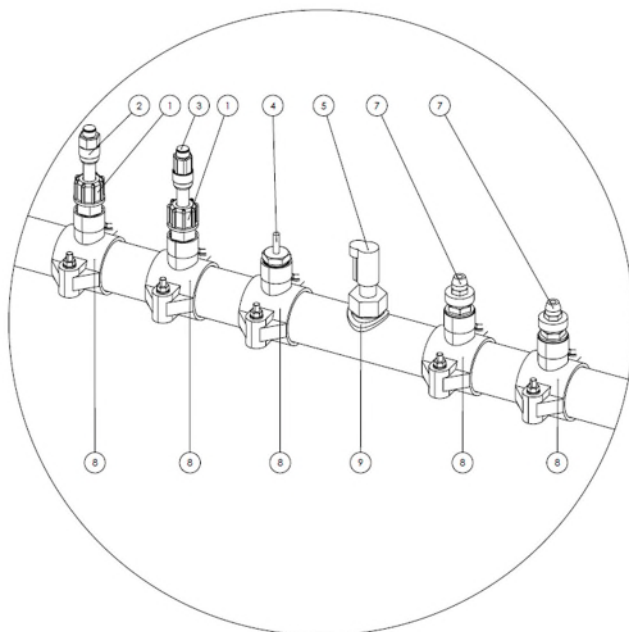
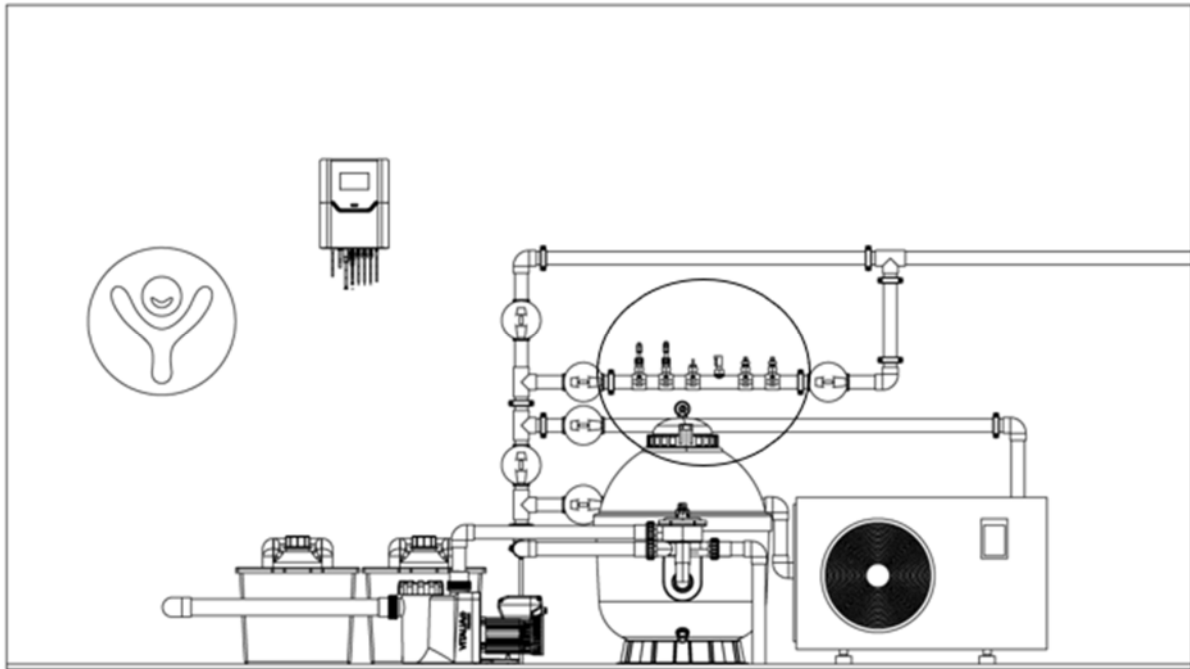
1. Connection cable for underwater spotlight (2m) with Yellow plug black 230V, for connection to a transformer for underwater spotlights
2. Control cable 5-core (3m) for Eco-Touch filter pump with Yellow plug black for connection to a multi-stage filter pump with three speeds (cable connection: white = speed 1, brown = speed 2, green = speed 3, yellow = start, grey = COM).
3. Connection set for pH canister low-level signal, suction lance with low-level signal and cable (2m), Yellow plug red, 3-pin
4. Connection set for chlorine canister low-level signal, suction lance with low-level signal and cable (2m), Yellow plug green, 3-pin
5. Connection cable for free chlorine electrode SN6 to Yellow plug blue (3-pin), 1.5m
6. Connection measuring cable SN6 / BNC plug for pH/Redox electrodes with connector, length 2m
7. Network/LAN cable connection (to be provided by customer)
8. Mains connection Yellow (1.5m) incl. plug, 230V/115V/AC (50/60Hz)
9. Connection cable for filter pump (1 m) with Schuko connector and Yellow plug black, 230V / 115V / AC (50 / 60 Hz)
10. dinotec BUS connection for extensions
11. Connection cable for external pumps (e.g. DDE). Y-connection cable (2x 2m) with Yellow plug red, 5-pin, or connection cable for external inline electrolysis (3m) with Yellow plug red, 5-pin
12. Flow connection cable. Paddle switch incl. cable (2m) with Yellow plug green for flow measurement, 5-pin or flow connection cable with connection for end position of a roller cover. Y-cable (2 m) with Yellow plug green, 5-pin for flow measurement and cover feedback.
13. Connection cable temperature / heating. Y-connection cable with Yellow plug blue, 5-pin, including temperature sensor and 2-core heater enable cable (3m)
14. Connection measuring cable SN6 / BNC plug for pH/Redox electrodes with connector, length 2m



6. Connection of measurement equipment

The Yellow Poolcontrol offers various options for installing the measurement equipment:

Option 1: Direct mounting in the pressure line (in the bypass)



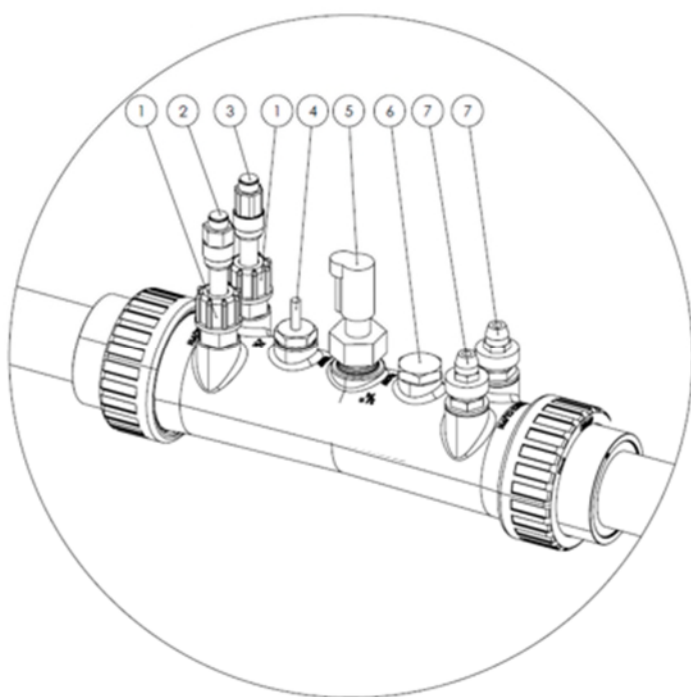
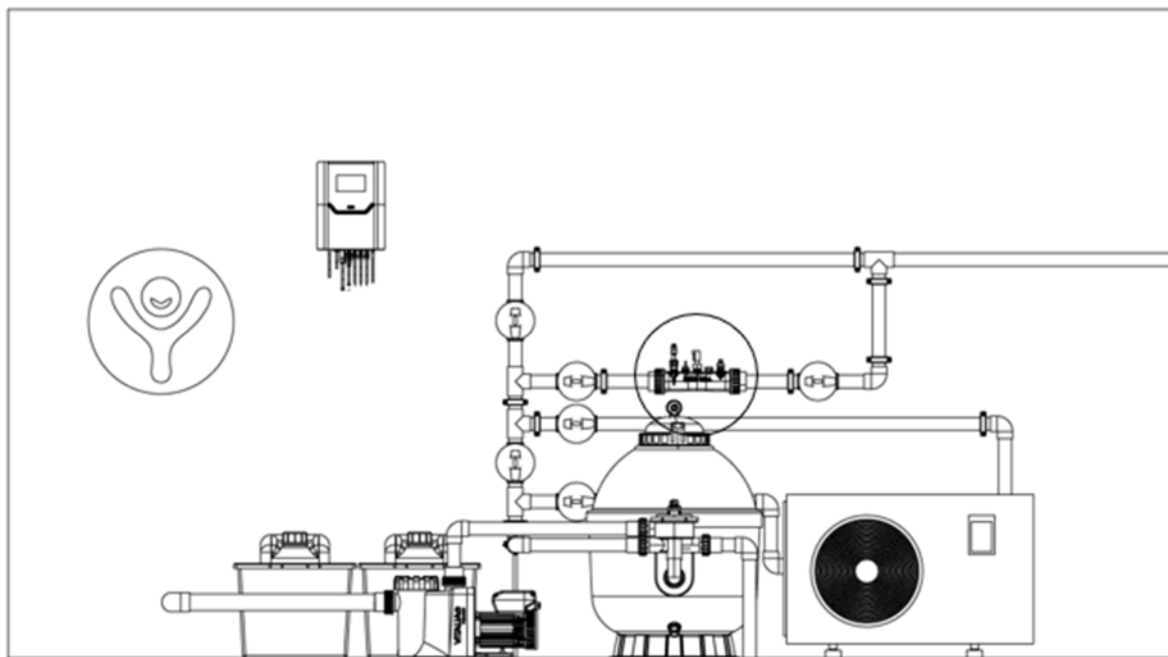
- 1 Electrode holder ½"
- 2 pH electrode
- 3 Rx electrode
- 4 Temperature sensor (option)
- 5 Paddle switch
- 6 Blind plug (Multi Connect)
- 7 Injection valve ½"
- 8 Tapping clamps ½"
- 9 Adhesive saddle with ¾" male thread

Set your flow rate to at least approx. 3 m³/h for D50, or 4 m³/h for D63.

Note: Make sure that the checkbox for "Sequential dosing" is enabled under System → Settings → Pool Configuration in the "General" section.



Option 2: Multi Connect measurement tube (D50/D63) (in bypass)



- 1 Electrode holder ½"
- 2 pH electrode
- 3 Rx electrode
- 4 Temperature sensor (option)
- 5 Paddle switch
- 6 Blind plug (Multi Connect)
- 7 Injection valve ½"

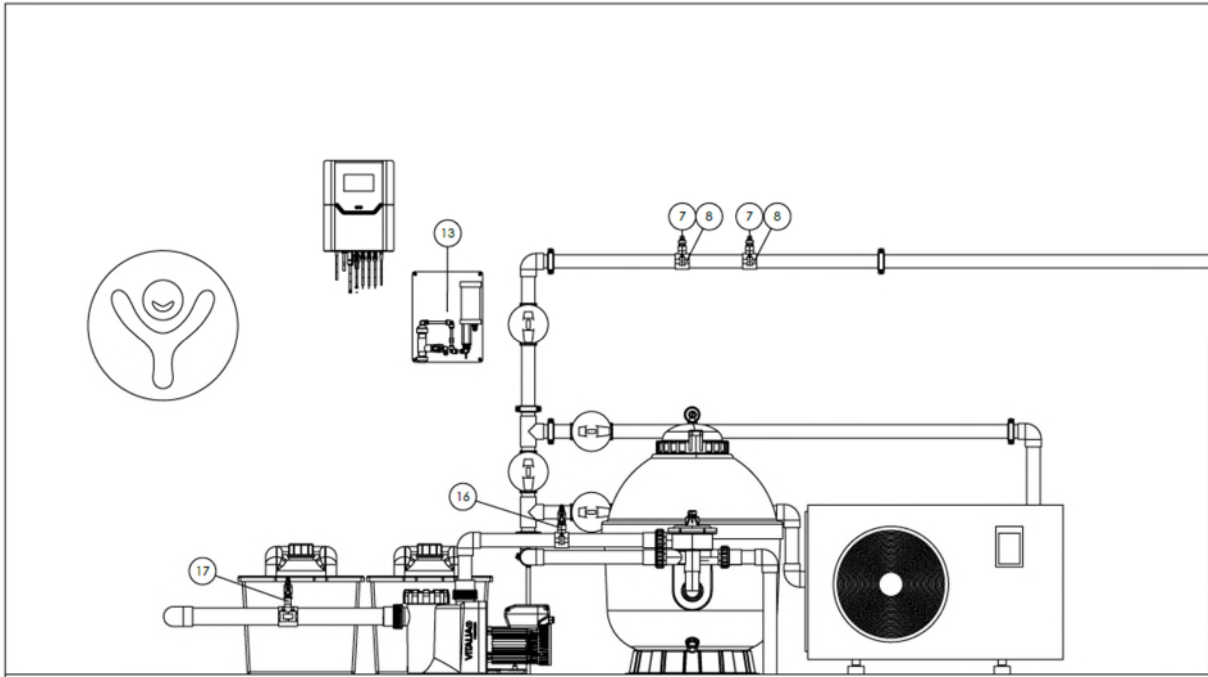
Set your flow rate to at least approx. 4 m³/h.

Note: Make sure that the checkbox for "Sequential dosing" is enabled under System → Settings → Pool configuration in the "General" section.



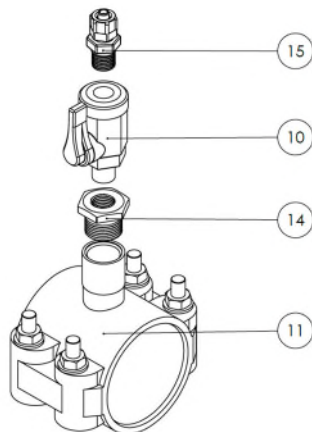
Option 3: Separate measuring cell

Version with flow cell



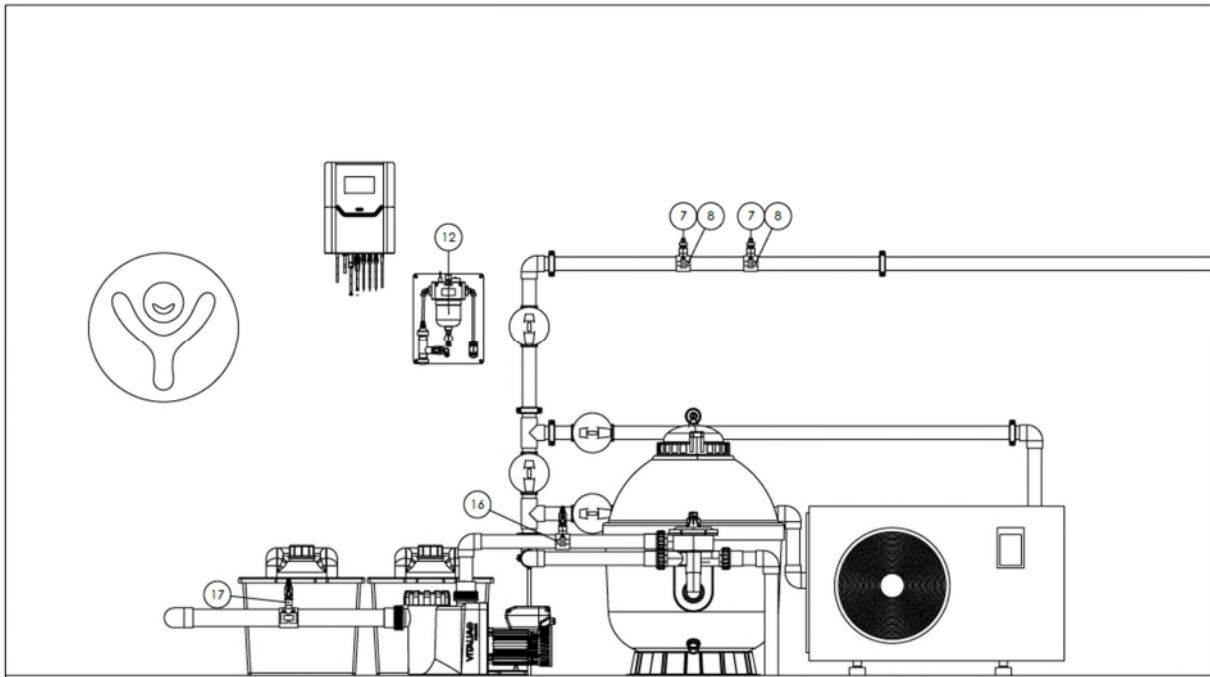
- 7 Injection valve 1/2"
- 8 Tapping clamps 1/2", D 50/63 (optional)
- 13 Flow measurement cell with fiber filter on wall mounting plate
- 16 Sample water connection (return) 1/4" male thread
- 17 Sample water connection (supply) 1/4" male thread

Sample water connection



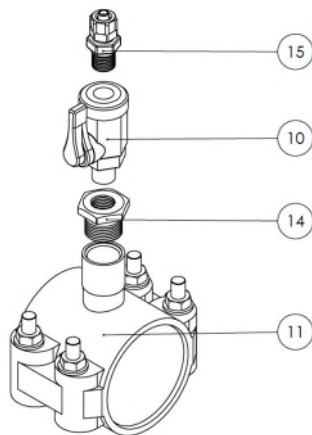
- 10 Ball valve
- 11 Tapping saddle 1/2" x D50/D63 optional
- 14 Reducer 1/2" x 1/4" (optional)
- 15 Hose connection

Version with measuring cell Universal FM for free chlorine, Redox and pH



- 7 Injection valve 1/2"
- 8 Tapping clamps 1/2", D 50/63 (optional)
- 12 Universal FM measuring cell with fiber filter on wall mounting plate
- 16 Sample water connection (return) 1/4" male thread
- 17 Sample water connection (supply) 1/4" male thread

Sample water connection



- 10 Ball valve
- 11 Tapping saddle 1/2" x D50/D63 optional
- 14 Reducer 1/2" x 1/4" (optional)
- 15 Hose connection



7. Initial commissioning

7.1 Preparation

Allow the Yellow (especially at lower ambient temperatures) to adjust to the ambient temperature for at least 6 hours to avoid condensation inside the device.

Before initial commissioning, check that all connections (cables, dosing hoses, impulse valves, etc.) are properly secured and correctly connected.

7.2 Setup assistant (pool configuration)

During initial commissioning, follow the setup assistant. In this process you define the individual configuration of your Yellow. These settings determine which menus will be available to you later.

Basic system data

- Name and location: Name of your pool and whether it is an indoor or outdoor pool.
- Sample water monitoring: Selection of the flow detection (float switch, flow sensor, or paddle switch).

Water treatment (chemistry)

- pH correction: Direction (reduce/increase), calibration (1-point/2-point), dosing method.
- Disinfection: Method (chlorine mg/L, Redox mV, chlorine + Redox, or Poolcare/active oxygen time-controlled) and dosing method.

Filtration and pumps

- Standard On/Off: For single speed filter pumps – only time-based programming available.
- EcoTouch / variable-speed: For multi-speed filter pumps, additional performance levels (Eco, Normal, Party) can be defined.

Note: The Eco input (external switch for energy-saving mode) is only available if you have a variable-speed pump.

Attractions

- Underwater lights: Configurable as a simple switch, push-button, or pulse control (for colour-changing LEDs).
- DMX: Enables professional DMX lighting control.



7.3 Setting the target values

After completing the setup, please check all configured target values. If you are using Poolcare/active oxygen to treat your water, also review all settings under “Target values”, such as pool volume, product concentration, etc.

Enter the user data and pool information. Only then can you use the full functionality of the Yellow Poolcontrol.

7.4 Filter times, frost protection and weather

- Set your filter run times under **Filtration** -> **Timer**.
- Set your thresholds and target values under **Extras** -> **Frost protection**.
- Enter your location under **Extras** -> **Weather**. If necessary, narrow it down, e.g. “Frankfurt am Main” or by selecting the nearest location. Keep in mind that slight inaccuracies may occur depending on the location.



8 Network and dinoConnect

To use the dinoConnect web and app service, your Yellow must be connected to the internet. Under **System** -> **Settings** -> **Network** -> **dinoConnect** , you can enable the connection and agree to data processing.

Connection to the dinoConnect app

1. Download the dinoConnect app and create your account.
2. On your Yellow device, go to **System** -> **Settings** -> **Network** -> **dinoConnect** -> **dinoConnect QR** to display a QR code.
3. Scan this code with your dinoConnect app.
4. Assign a name to your system and press "Save". Done.



App Store



Google Play Store

Note: The user who completes the initial setup becomes the owner of the device and can later grant access to additional users.

Note: Please note that not all functions offered by the Yellow Poolcontrol can be configured or viewed in the app or on the web platform.

Usability limitations that may occur depending on the smartphone model do not constitute grounds for complaints.



9 Connection of optional components

9.1 ECO contact for roller cover

Connect the roller cover feedback contacts individually to your roller cover controller using the “Y-cable” (Y-connection cable no. 12), available as an accessory. In **System** -> **Settings** -> **Pool configuration**, select the operating direction for the input. Under **Extras** -> **ECO**, set the desired level for the filter pump.

9.2 External inline electrolysis

Connect the contacts to the flow contact in your electrolysis control unit using the control cable (no. 11), available as an accessory.

1. In **System** -> **Settings** -> **Pool configuration**, -> **Measurement technology**, set the dosing method in the disinfection measurement section to ‘External (On/Off)’.
2. Under **Redox / Chlorine** -> **Control**, set the dosing time monitoring to “0 min”.

9.3 Building automation and interfaces

The Yellow Poolcontrol is designed for seamless integration into modern building management systems and smart home environments. Communication is entirely IP-based via the physical network interface (Ethernet/RJ45) or the integrated Wi-Fi module.

The system supports the following protocols simultaneously:

- **Modbus TCP:** Operates as a server (slave) for control and register queries by higher-level systems. Can be activated under **System** -> **Network**. A register list can be exported.
- **KNX:** Object-based communication via KNX IP BAOS (Bus Access and Object Server).
- **MQTT:** Publish/subscribe protocol for IoT applications and cloud integration.
- **DMX/Art-Net:** Control of DMX devices via the Art-Net protocol (DMX over IP).

Note: For physical connection to fieldbus-based 2-wire systems (KNX twisted pair or DMX-XLR/terminal), appropriate IP gateways or converters must be provided by the customer and integrated into the network infrastructure.



You can find an overview of the available data points here:



PART 2: OPERATING INSTRUCTIONS

10 User interface concept

The Yellow is designed for intuitive operation. You can navigate to your desired function in several ways: via the menu sidebar, the menu icon, directly through the main display tiles, the technical overview screen, or the full-text search.

10.1 The sidebar (menu)

On the left edge of the screen, you will find the main navigation. From here, you can access all functional areas:

- **Overview:** Your central dashboard.
- **Operation:** General on/off switches and modes.
- **Trend:** Graphical trend history of your water parameters.
- **Parameter sections** (e.g., pH, chlorine, temperature): Detailed settings for each individual parameter.
- **Filtration:** Control of filter times and pump output, manual backwashing.
- **Maintenance:** Maintenance intervals, snapshots, and archives.
- **Extras:** Settings for special modes (frost protection, party mode, holiday mode, weather).
- **System:** Basic settings, user management, AI chatbot, order request.

10.2 Gesture control

Your Yellow Poolcontrol is equipped with a capacitive touchscreen and supports the following gestures:

Gesture	Function
Swipe from the left edge to the right:	Open the menu bar
Swipe from top to bottom:	Open the status screen
Swipe from right to left on the top bar:	Go one step back
Double-tap the top status bar:	Return to the home screen
Press and hold a menu item (2 sec.):	Display help window
Press and hold the top status bar (2 sec.):	Activate screensaver
Tap 4 times: top left -> bottom left -> top right -> bottom right (■):	Deactivate the operation lock

10.3 Full-text search

Use the magnifying glass icon in the upper right corner of the screen. Enter your search term and follow the suggested link.



11 Home screen (Dashboard)

After launching the app, you arrive at the overview—your central command center.

- **Live tiles:** You immediately see the most important real-time values (e.g., current pH level, Redox/chlorine level, water temperature).
- **Navigation:** Tapping a tile takes you directly to the corresponding detail menu.

Status indicators (traffic light system):

- **Green:** Everything is functioning normally; control is active or within the target range.
- **Yellow (warning):** A value deviates or an event is pending (e.g., startup delay active, chemical canister running low). The system continues operating, but attention is required.
- **Red (alarm/error):** A critical condition (e.g., value far outside the tolerance range). Control for this parameter is usually stopped.

Note: You can find the colour legend in the respective help menu.

12 Operation and basic settings

In the Operation menu, you control the system's behavior and define which automatic functions should be active in general.

12.1 Main switch and sub-sections

- **System (main switch):** When set to Off, all control processes and pumps stop. Use this, for example, during maintenance work.

Warning: When the system is off, there is no circulation and no disinfection!

- **Automatic disinfection / pH / temperature:** Here you can individually deactivate specific control loops.

Note: You want the filter pump to keep running but temporarily stop chlorine dosing? Set "Automatic disinfection" to Off.



12.2 Special modes

- **Frost protection:** Activates freeze-protection monitoring.
- **Party mode:** Starts Party mode immediately.
- **Holiday mode:** Activates the holiday program.

12.3 Delays (timer)

- **Switch-on delay:** After a restart or power outage, the system waits for the defined time before starting dosing. The probes must first be flushed with fresh sample water to provide accurate readings. This prevents dosing based on old or incorrect values.
- **Alarm delay:** If a value falls outside the target range, the system does not trigger an alarm immediately. Only if the error persists for longer than the set time (e.g., 60 seconds) will an alarm be issued. This prevents false alarms caused by brief fluctuations.

13 Water treatment: Disinfection with chlorine or chlorine-free

Depending on your equipment (see pool configuration), your Yellow unit regulates disinfection using chlorine, ORP (redox), or Poolcare (active oxygen).

13.1 Setpoints and alarms

- **Setpoint:** The value the controller aims to reach and maintain (e.g., 0.5 mg/l chlorine or 750 mV Redox).
- **Upper/lover alarm value:** Absolute limits. If, for example, the upper alarm value is exceeded, dosing stops automatically as a safety measure and an alarm is triggered to prevent overdosing.

13.2 Poolcare (time-controlled)

If you use Poolcare (active oxygen), the system doses based on pool volume rather than measured values. Enter the following values in the **Setpoints** menu:

- **Pool volume:** The size of your pool in m³.
- **Product concentration:** As indicated on your canister label (in %).
- **Circulation interval per day:** Rule of thumb: Filtration time per day = pool volume × 3 ÷ pump capacity.
- **Pump capacity:** The delivery rate of your dosing pump (in l/h).
- **Minumum runtime:** The shortest continuous operating time of the dosing pump to ensure accurate dosing. Using these values, the system automatically calculates the required daily dose.



13.3 Control (expert settings)

The Yellow uses an advanced PI controller to reach the setpoint accurately without overshooting.

- **P-range (proportional range):** Generates a control output proportional to the current deviation from the setpoint. Example: With a P-range of 0.5 and a pH setpoint of 7.0, proportional adjustments begin at 6.5 pH, gradually increasing dosing pause times.
- **I-controller (integral time):** Evaluates the past trend of control deviations. This parameter is fixed within the device.
- **Asymmetric hysteresis** (for on/off switching control, e.g., inline electrolysis): Prevents constant switching caused by small fluctuations. Example: With a redox setpoint of 700 mV and a hysteresis of 20, the switch-on point shifts downward by 20 mV.
- **Dosing time monitoring (timeout):** If the pump runs continuously for a defined period (e.g., 20 min) without the measured value reaching the setpoint, dosing stops.

Note: Setting the timeout to 0 disables dosing time monitoring (required when operating electrolysis as an external pump). An alarm triggered by dosing time monitoring must be acknowledged manually.

13.4 Manual Continuous Dosing (Shock Chlorination)

You can run the dosing pump for a set period of time (e.g., 5 minutes) or until a preset shutdown threshold is reached.

Caution: This function overrides the automatic control! Stay nearby while it is active.

14 Water treatment: pH value

The correct pH value is the foundation for effective disinfection. Your system can lower the pH value (usually necessary) or raise it, depending on the pool configuration.

14.1 Setpoints

- The ideal pH level is between 7.0 and 7.4.
- Set the target value accordingly (default: 7.2 pH).
- Set alarm limits (e.g., 6.8 and 8.0 pH) to be notified when values deviate.

14.2 Sequential dosing

If activated in the pool configuration, this function prevents chlorine and pH-adjusting chemicals from being dosed into the line at the same time. This avoids dangerous chemical reactions (formation of chlorine gas) at the injection point. The system switches intelligently between the pumps.



15 Filtration and circulation

15.1 Timer

You can define multiple time periods for the pump to run. Example: 08:00–12:00 and 14:00–20:00. Outside these times, the water remains inactive (unless Frost Protection or Party Mode is active).

You can set any number of switching points per day. Each switching point can be activated or deactivated individually. The Yellow does not perform a plausibility check.

15.2 Multi-stage filter pump (EcoTouch)

If you have selected a modern, multi-stage filter pump, you can store different power levels for different situations:

- **Step 1 (Eco):** Energy-saving mode (e.g., at night or when the cover is closed).
- **Stage 2 (Normal):** Standard operation during filter times.
- **Step 3 (Maximal):** Maximum power, e.g., during manual backwashing.

Note: A special feature: You can assign a filter level (1, 2, or 3) to each switching point. This allows for convenient and individually optimized filtration settings.

15.3 ECO contact

When an input signal is received, the ECO contact adjusts the filter pump output (for a controlled pump) to the set value. For example, the contact can be triggered by a roller cover, causing the filter speed to switch to level 1 when the cover is closed.

Warning: This function is only a supplementary safety feature. You must ensure that the filter pump is switched off while the cover is moving; otherwise, damage to the cover or the pool may occur.

Note: For the ECO contact, you need the accessory "pre-assembled Y-cable with Yellow green 5-pin connector."

15.4 Flow monitoring

The system checks whether water is actually flowing (via paddle switch, float switch, or flow meter). If the pump is switched on but no flow is detected (e.g., ball valves closed, pre-filter clogged), an alarm message is displayed.

Warning: Without flow, heating and dosing are immediately disabled.



16 Temperature and heating

Your Yellow can control a heating system (heat pump, heat exchanger, solar valve) via a potential-free contact (option in the pool configuration).

- **Control:** You set a desired temperature (e.g., 28 °C).
- **Logic:** If the water temperature falls below the setpoint and filtration is running, the enable signal is activated via the potential-free contact.
- **Hysteresis:** To prevent constant on/off cycling, a hysteresis value can be set (e.g., 1 °C). The heater will only switch on again once the actual temperature falls below the setpoint by the hysteresis value.

17 Extras

17.1 Party mode

For carefree swimming fun: With one click, all systems are activated and the filter pump runs at the set level (for multi-speed pumps). All set filtration times are temporarily overridden. The mode ends automatically after a configurable time (e.g., 4 hours) and then returns to normal filter times. You don't have to worry about switching anything off.

17.2 Holiday mode

If you are away for an extended period: Enter the start and end dates of your holiday. During this time, the system reduces its output (lower frequency, lower temperature according to the set values) to save energy, while still keeping the water circulating.

17.3 Frost protection

The Yellow is equipped with a frost protection feature. To use it, the installation location must be entered correctly under **Extras** → **Weather**. The Yellow must be connected to the internet. The outside temperature is provided by an online weather service.

Note: Make sure to spell your location correctly. If your location cannot be clearly identified, select the nearest available location.

Caution: Weather data may be subject to inaccuracies and time delays. Therefore, set the two switching thresholds for frost protection with a sufficient safety margin, e.g., 4°C.



17.4 Winterization (active/passive)

Active winterization

If you winterize your pool system actively (water remains in the pool), ensure that:

1. The frost protection function is activated and configured.
2. The Yellow has an active internet connection.
3. The correct location is selected.
4. The active and pause times are adjusted to the temperature conditions.
5. The second temperature threshold is activated and configured.

Note: Active frost protection is a supportive function and does not relieve you of your personal duty of care and supervision.

Passive winterization

If you choose to winterize your pool passively (water is fully or partially drained):

1. Follow standard guidelines for winterizing your pool.
2. Ensure that the Yellow is stored in a frost-free environment that prevents condensation, or, if in doubt, disassemble it.
3. Remove the electrodes from the pipe/sensor cell and store them according to the manufacturer's instructions.
4. Ensure that, when restarting the system in spring, the Yellow is allowed to adjust to the ambient temperature for at least 6 hours (to prevent condensation inside the device).

18 Lighting control

By default, the Yellow lighting control allows you to switch your pool lights on and off. For RGBW spotlights with switching logic, you can trigger a colour change by briefly pressing the button (can be configured via **System** -> **Settings** -> **Pool Configuration** -> **Attractions**).

Optionally, you can also control colour changes and scenes via the Yellow using an additional DMX module.



19 Maintenance, service and archive

The Yellow helps you keep track of maintenance.

19.1 Service intervals

The system tracks how long probes, hoses, or valves have been in use. When a maintenance interval expires (e.g., “Calibrate pH probe” or “Replace pump hose”), you will receive a notification.

After completing the maintenance, you can reset the counter in the Service menu or in the notification list.

19.2 Calibration archive / Event log

The system permanently stores every calibration performed. In the archive, you can track at any time: When was the calibration performed? Who performed the calibration? What values (slope, zero point) were determined? This is helpful for monitoring the aging of your electrodes over the years.

19.3 Calibrating the pH electrode

Your pH electrode must be calibrated regularly. Follow the maintenance instructions provided with your Yellow.

You can access the calibration menu directly from the value display on the home screen. Follow the instructions provided with your Yellow Poolcontrol to perform the calibration.

19.4 Calibrating the chlorine electrode (option)

Your chlorine electrode must be calibrated regularly. Follow the maintenance instructions provided with your Yellow. You can access the calibration menu directly from the value display on the home screen. Follow the instructions provided with your Yellow Poolcontrol to perform the calibration.

19.5 Snapshot Manager (System recovery)

Snapshots allow you to capture the current state of your Yellow at the time they are created. A complete backup of the entire configuration is created—including setpoints, timer settings, log histories, archives, and other system data. Snapshots can be restored at any time, allowing you to reliably reconstruct an exact system state. The process takes only a few seconds.

Note: We recommend creating a snapshot and saving it externally, for example before sending the device in for inspection. You can create a snapshot in the **Settings** → **Snapshot** menu.



External backup of a snapshot:

Use the internal web interface of your Yellow. Enter your Yellow's local IP address followed by port 8123 (http://[IP]:8123) into your browser. Your Yellow and browser must be on the same network. Log in with your credentials and download your snapshot.

Warning: If an update was installed after the snapshot was created, restoring the snapshot will overwrite that update and all other log data!

Warning: A snapshot cannot be transferred to other device types!

19.6 Setpoint manager

Saves your setpoint settings at the time of creation. For example, you can save your summer and winter settings. You can restore these to your Yellow at any time. Unlike a snapshot, restoring a setpoint profile only applies the settings without overwriting any other data (such as history).

19.7 Order request

Through the **Order Request** menu, you can conveniently fill out a pre-designed form for consumables and spare parts (e.g., chlorine, probes, hoses). Your Yellow sends an email with your request directly to the registered specialist dealer.



20 System and users

20.1 User management and Expert mode

Some expert settings (e.g., calibration resets, factory settings, control settings) are protected. Use the login button with an unlock code or the dinoChip to obtain extended access rights.

In the menu item **System** -> **Users**, you can enable expert mode. The unlock code for the Expert user is **16178**. Alternatively, you can log in via RFID using a dinoChip (optional).

Warning: Functions in Expert Mode should only be adjusted by qualified personnel! Incorrect settings may damage your system and compromise proper operation.

Note: The RFID interface automatically deactivates if no interaction with the Yellow occurs for 1 minute. To "wake it up," simply touch the touchscreen of your Yellow.

20.2 Operation lock / Child safety lock

You can activate the operation lock in **System** -> **Settings** -> **Display settings**. The operation lock automatically locks the screen after the screensaver activates. To unlock it, tap once on each of the following screen areas in this order: top left → bottom left → top right → bottom right (**M**).

20.3 Signature Light

The Signature Light (LED light strip) has several functions:

- **Visual indicator:** In case of alarms, the Signature Light flashes in the configured colour. In Expert Mode, it automatically switches to red.
- **Design element:** Select your preferred colour in **System** → **Settings** → **Signature Light**.

Note: In the menu item Signature Light alarm, you can choose whether the Signature Light should turn on and flash during an alarm even if it is currently switched off.

20.4 Design and themes

Under **Settings** -> **System**, you can configure the Signature Light and select your preferred screensaver.

20.5 Reset to Factory Settings

You can reset the Yellow via **System settings** -> **Reset to Factory Settings**.

You can also reset each value individually to its factory default: Press and hold the respective setting. A dialog box titled "Options -> Reset to Default" opens.

20.6 Change of ownership

If the system changes owners, we strongly recommend resetting it via the **Settings** menu. This will reset the system to the factory settings and delete the cloud key for remote access.



21 Data protection

We are committed to protecting your personal data. The pool management system processes only the following data, and only if you provide it directly on the device:

- Customer data: Name, address, contact details
- Dealer data: Name, address, contact details
- Pool data: e.g., size, volume, pool cover, pool type
- Operating and measurement data of the device

Purpose of processing:

- Operation, control, and remote access to the pool management system
- Location-based weather information
- Processing of order requests for wear and consumable materials
- Support in case of service requests

Your data will not be used for advertising purposes.

Access to the data is granted to:

- You as the end customer
- The specialist dealer you have registered, provided you grant access
- dinotec, provided that you grant remote access

Storage and deletion:

The data will only be stored for as long as necessary to fulfill the purposes stated above. You can delete or change your personal data and access permissions at any time directly on the device.

Legal basis:

Data processing is based on your consent in accordance with Article 6(1)(a) of the GDPR.

Your rights:

You have the right to access, rectification, erasure, restriction of processing, data portability, and to withdraw your consent. You can exercise most of these rights directly on the device itself at any time.



22 Services and cloud services

The Yellow offers various services that require external cloud services (e.g., online weather service for the frost protection function). These functions are a voluntary service provided by dinotec. We reserve the right to change providers or discontinue these services at any time if necessary. We assume no liability for incorrect information provided by these services.

We recommend you to store your customer information and pool configuration in full. This allows you to use the full range of features of the Yellow (e.g., integrated order request). The stored pool configuration helps a specialist provide faster and better technical support via remote service. The stored data is used by dinotec exclusively for service purposes. You can modify the data at any time.

23 Troubleshooting

For troubleshooting, refer to the respective context menu of the specific message.

Alternatively, go to **System** -> **AI Chatbot** to consult your 24/7 service chatbot or scan the QR code below:



If you still encounter problems during operation:

1. Contact your specialist dealer.
2. All returns must be registered with dinotec GmbH via your specialist dealer using the appropriate return form.
3. If possible, take a snapshot and save it to an external storage device.

Warning: IMPORTANT: Do not open the Yellow Poolcontrol. Doing so will void your warranty!



24 Operator obligations

Regular monitoring of water parameters

Using this system in water treatment does not relieve you from the obligation to regularly (weekly) check the water parameters separately. You can check the values using a handheld device or a photometer. This is the only way to ensure that emerging deviations can be detected and corrected early.

Additional obligations

As the operator, you are responsible for the proper use and operation of your swimming pool and its associated equipment. You are also obligated to comply with the relevant standards, guidelines, regulations, and safety requirements (e.g., child safety, floor drain in the technical room, adequate ventilation and lighting, appropriate

sizing of all work areas, etc.). Seek advice from a pool specialist dealer.

Note: We recommend having the fill water analyzed in advance so that the system can be optimally adjusted to the water parameters in consultation with your specialist partner. A regular, preferably weekly, visual inspection of the entire system is advised.

Make sure to replace wear parts regularly according to the maintenance recommendations provided by your Yellow device.

Sending the order request directly from the system to your specialist partner ensures that you receive the correct original parts.





dinotec GmbH
Water & Pool Technology
Philipp-Reis-Str. 28
61130 Nidderau/Germany
Phone: +49 (6187) 41379-0
E-mail: mail@dinotec.de
www.dinotec.de
www.niedrig-energie-pool.de
www.Poolpflege.info

Subject to technical changes. Errors excepted. 02/2026

a member of

